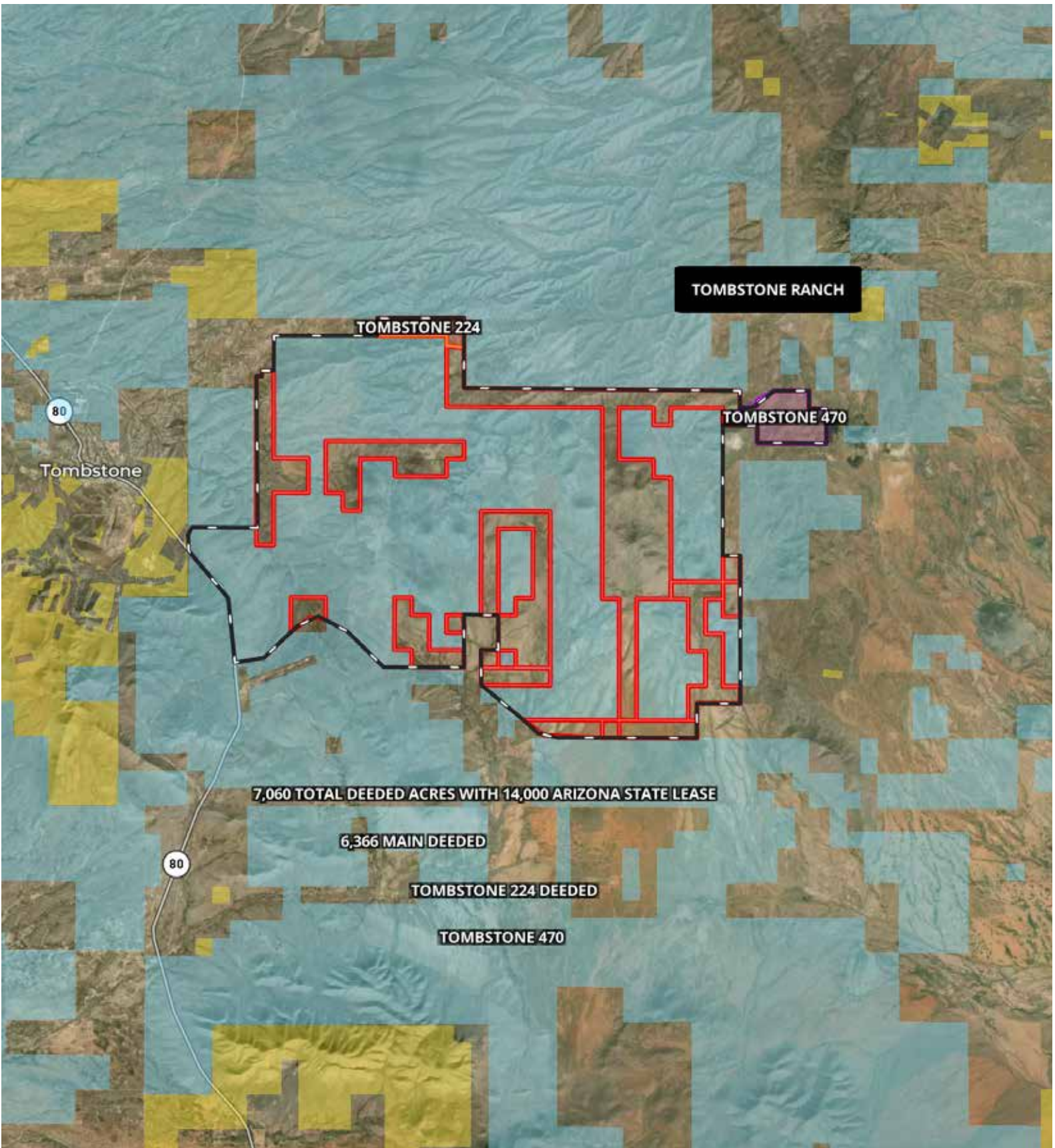


## TOMBSTONE 224 ACREAGE

TOMBSTONE, ARIZONA | 224 ACRES | \$900,000

This 224± deeded-acre property offers a rare opportunity to own scenic land just minutes from the historic town of Tombstone, Arizona. With city water already on the property, the groundwork is in place for development, whether you envision building a private residence, creating a small ranch, or holding the land as a long-term investment. Rolling terrain and wide-open views showcase the high-desert beauty southern Arizona is known for, providing privacy without sacrificing accessibility.

Owning land in Tombstone means more than acreage, it's an investment in a region rich with Western history, mild winters, and a growing demand for rural lifestyle properties. Cochise County offers favorable property taxes, fewer development restrictions than many urban markets, and proximity to services in nearby Sierra Vista and Bisbee. This combination of infrastructure, scenery, and location makes the property well-suited for personal use, future development, or land appreciation in one of Arizona's most iconic settings.



**WESLEY MILLER**

928-245-6560

wesley@ranchland.com

www.ranchland.com

**RANCH@COMPANY**  
 REAL ESTATE BROKERAGE & AUCTION SERVICES

*\* The information contained in this brochure has been obtained from sources believed to be reliable and is believed to be correct, but the owners and brokers do not guarantee its accuracy. Offering is subject to errors, withdrawal without notice. All distances, sizes, capacities, and similar measurements and figures are approximate. All information about properties should be independently verified by interested purchasers. All rights reserved. ©*

*\*\* A division of Mason & Morse Ranch Co., LLC.*